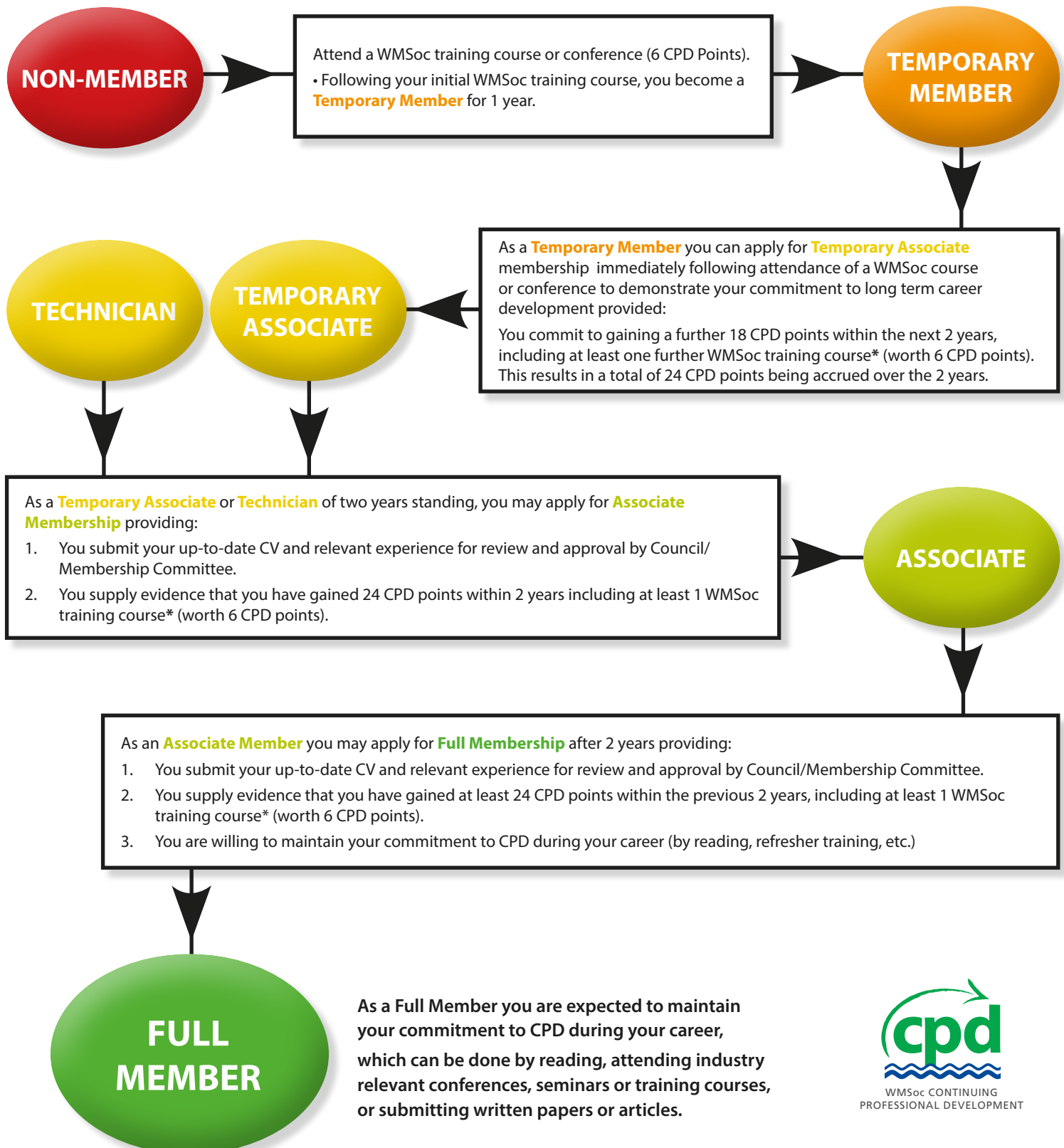


# WMSoc CPD Road Map

The Water Management Society's Continuing Professional Development (CPD) programme is the process of tracking and documenting skills, knowledge and experience gained both formally and informally as your career develops beyond your initial training. The WMSoc CPD Road Map will focus your development and allow you to progress to higher grades of WMSoc Membership as desired. CPD points are awarded for undertaking relevant classroom and vocational training, reading and article submissions, etc., for example:

- 1 CPD point = 1 hour of recorded learning time (e.g. reading relevant technical journals)
- 6 CPD points = 1 WMSoc Training Course or Conference (\*or equivalent)
- Up to 12 CPD points may be awarded for writing a technical paper published in [waterline](#)



\* Undertaking the relevant available WMSoc training courses is preferable and will support your application for higher grades of membership as the Membership Committee can easily verify the quality of your training. However, the validity of other industry-related courses is acknowledged and will also be considered.